

4th North-American Training Course on StereoElectroEncephaloGraphy

«Epilepsies associated with Malformations of cortical development»

September 20th-24th, 2015

Sacacomie Hotel, Saint-Alexis-Des-Monts, QC, CANADA

Dear colleagues and friends,

On behalf of the Scientific Committee, we are delighted to welcome you for the Fourth North-american Training Course in StereoElectroEncephaloGraphy (SEEG), which will be held from september 20th to 24th, 2015 in Montreal.

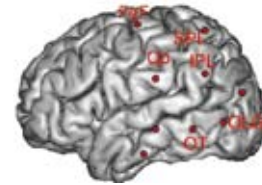
This Fourth SEEG course will focus on «Epilepsies associated with Malformations of cortical development» and will follow the same organization as the one used for the three previous courses .

It will be primarily based on computer-assisted practical training sessions where each attendees can access and analyse numerical neuroimaging and video-EEG/SEEG data, and extensive plenary discussions. These will cover the classification and neuroimaging of the Malformation of the cortical development, as well as all aspects directly related to SEEG, including selection criteria, choice of the number and targets of depth electrodes, interpretation of SEEG recordings, results of cortical stimulation, and surgical decision-making, and all aspects directly related to SEEG, including selection criteria, choice of the number and targets of depth electrodes, interpretation of SEEG recordings and results of cortical stimulation, as well as surgical decision-making.

We hope that this 4th round will be as successful as the previous ones and look forward to welcoming you at the outstanding Sacacomie Hotel.

With our best regards.

Stefano Francione,
Philippe Kahane & Philippe Ryvlin
Course Directors



SCIENTIFIC COMMITTEE

Fabrice Bartolomei (Marseille)

François Dubeau (Montreal)

Stefano Francione (Milano)

Jean Gotman (Montreal)

Philippe Kahane (Grenoble)

Hans Lüders (Cleveland)

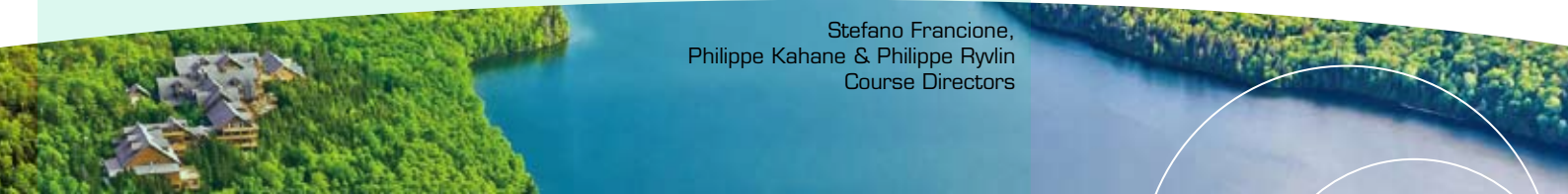
Philippe Ryvlin (Lyon)

FOR MORE INFORMATION. PLEASE CONTACT :

SEEG Course Secretariat - ANT CONGRES

154 av. de Lodève - 34070 MONTPELLIER - France

@ : seeg@ant-congres.com - Tel : +33 (0) 4 67 10 92 23



Welcome

Dear Colleagues, dear Friends

On Behalf of the Scientific Committee, we are glad to announce the fourth North-American Training Course in Stereo-ElectroEncephaloGraphy (SEEG), which will be held from September 20 to 24, 2015.

This course ends the four years topic-oriented cycle started in 2012 with Temporal and Temporal 'plus' epilepsies in 2012, Frontal epilepsies in 2013, Posterior cortex epilepsies in 2014, and Epilepsies associated with Malformations of cortical development this year.

As last years, participants will primarily train on real patient's data under the supervision of SEEG experts from the experienced centers of Cleveland, Grenoble, Lyon, , Milano, Montreal, Nancy and Rennes.

After reviewing digitized video-scalp-EEG, MRI, and PET data, each group will have to decide on whether to perform and how to design an optimal SEEG investigation.

They will then review and analyze SEEG findings, and eventually recommend a surgical decision. Each group conclusions will be thoroughly discussed during plenary sessions.

Plenary sessions will also include lectures about the different types of malformations of cortical development, the way to assess their metabolic and fMRI signatures and new methods for post-processing MRI.

This year is particular as The famous book of Bancaud et Tallairac on « EEG et SEEG dans les tumeurs cérébrales et l'épilepsie » celebrates his 50th birthday.

We are very happy to welcome you in the amazing Sacacomie venue,

With our best regards,



Stefano FRANCIONE



Philippe KAHANE



Philippe RYVLIN

Course Directors

Stefano FRANCIONE (Milano)

Philippe KAHANE (Grenoble)

Philippe RYVLIN (Lyon)

Invited Faculties

Andreas BERNASCONI (Montreal)

Roberto MAI (Milano)

Arnaud BIRABEN (Rennes)

Louis MAILLARD (Nancy)

Francesco CARDINALE (Milano)

Lorella MINOTTI (Grenoble)

Francine CHASSOUX (Paris)

Alexandra MONTAVONT (Lyon)

François DUBEAU (Montreal)

Dang NGUYEN (Montréal)

Jean GOTMAN (Montréal)

Karine OSTROWSKY-COSTE (Lyon)

Prasanna JAYAKAR (Miami)

Roberto SPREAFICO (Milano)

Samden LHATOO (Cleveland)

Laura TASSI (Milano)

Scientific Committee

Fabrice BARTOLOMEI (Marseille)

Philippe KAHANE (Grenoble)

François DUBEAU (Montréal)

Hans LÜDERS (Cleveland)

Stefano FRANCIONE (Milano)

Philippe RYVLIN (Lyon)

Jean GOTMAN (Montréal)

Organisation

ANT CONGRES - Nathanaëlle Touchon-Zakraoui & Florence Marsy
154 avenue de Lodève - 34070 MONTPELLIER/FRANCE
SEEG@ant-congres.com - Tel : + 33 4 67 10 92 23 - Mob : + 33 6 85 54 70 98
Graphic design : www.korn-graphik.pro

Sunday, September 20th, 2015

7:30 - 8:00 p.m

Introduction

8:00 - 8:45 p.m

Opening Conference : Pathophysiology of MCDs

Speaker : R.Spreafico (Milano)

Monday, September 21st, 2015

8:30 - 9:00 a.m

Lecture 1 : SEEG in type II FCD : when and how

Speaker : F.Chassoux (Paris)

9:00 - 9:15 a.m

Discussion

9:15 - 9:45 a.m

Lecture 2 : SEEG in type I FCD: when and how

Speaker : L.Tassi (Milano)

9:45 - 10:00 a.m

Discussion

10:00 - 10:30 a.m

Coffee break

10:30 - 11:00 a.m

Lecture 3 : SEEG in polymicrogyria: when and how

Speaker : L.Maillard (Nancy)

11:00 - 11:15 a.m

Discussion

11:15 - 11:45 a.m

Lecture 4 : SEEG in periventricular heterotopia: when and how

Speaker : F.Dubeau (Montreal)

11:45 - 12:00 p.m

Discussion

12:00 p.m

Lunch Buffet

Monday, September 21st, 2015

3:15 - 4:00 p.m	Lecture 5 : SEEG in tuberous sclerosis: when and how <u>Speaker</u> : P.Ryvlin (Lausanne)
4:00 - 5:30 p.m	Parallel Workshops : Case 1 Phase 1
5:30 - 6:00 p.m	General discussion : Case 1 Phase 1
6:00 - 6:30 p.m	Aperitif
6:30 - 8:00 p.m	Parallel Workshops : Case 1 Phase 2
8:00 - 8:30 p.m	General discussion : Case 1 Phase 2
8:30 p.m	Dinner

Tuesday, September 22nd, 2015

8:30 - 11:15 a.m	Parallel Workshops : Cases 2-3 Phase 1
11:15 - 11:30 a.m	Coffee break
11:30 - 12:30 p.m	General discussion : Cases 2-3 Phase 1
12:30 p.m	Lunch Buffet
3:15 - 4:00 p.m	Lecture 6 : Post-processing for MRI-occult dysplasia <u>Speaker</u> : A.Bernasconi (Montreal)
4:00 - 6:45 p.m	Parallel Workshop : Cases 2-3 Phase 2
6:45 - 7:15 p.m	Aperitif
7:15 - 8:15 p.m	General discussion : Cases 2-3 Phase 2
8:15 p.m	Dinner

Wednesday, September 23rd, 2015

8:00 - 11:15 a.m

Parallel Workshop : Cases 4-5 Phase 1

11:15 - 11:30 a.m

Coffee break

11:30 - 12:30 p.m

General discussion : Cases 4-5 Phase 1

12:30 p.m

Lunch Buffet

3:15 - 4:00 p.m

Lecture 7 : fMRI and EEG/fMRI in MCD: Functional and epileptological considerations

Speaker : J.Gotman (Montreal)

4:00 - 6:45 p.m

Parallel Workshop : Cases 4-5 Phase 2

6:45 - 7:15 p.m

Aperitif

7:15 - 8:15 p.m

General discussion : Cases 4-5 Phase 2

8:15 p.m

Dinner

Thursday, September 24th, 2015

8:30 - 9:00 a.m

Lecture 8 : Celebrating the 50 years of Bancaud and Talairach

Speaker : P.Kahane (Grenoble)

9:00 - 9:15 a.m

Discussion

9:15 - 12:00 p.m

Case presentations

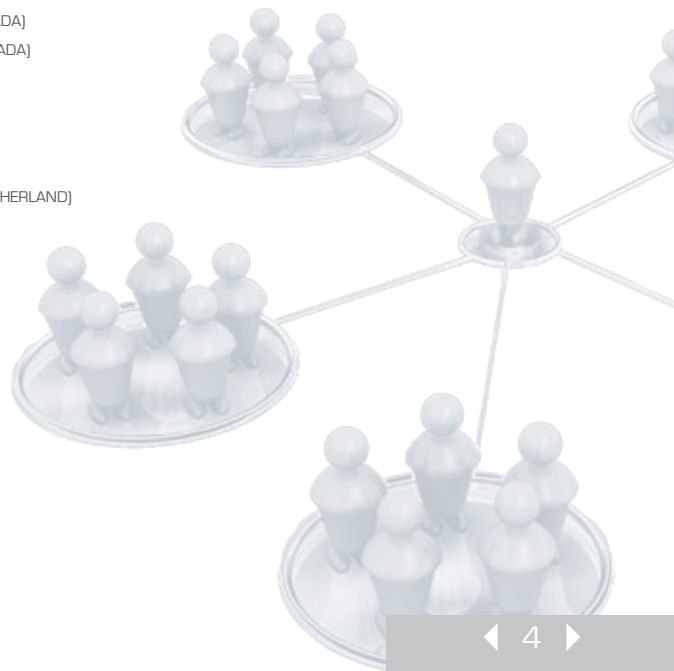
12:00 p.m

Goodbye buffet

PARTICIPANTS

ALTHANI Ziyad (UK)
AN Dongmei (CHINA)
ANDRADE Rene (COLOMBIA)
BAEESA Saleh (SAUDI ARABIA)
BENGZON Johan (SWEDEN)
BLEASEL Andrew (AUSTRALIA)
BUITRAGO Cesar (COLOMBIA)
BURNEO Jorge (CANADA)
CROSS Helen (UK)
D'GIANO Carlos (ARGENTINA)
EGGE Arild (NORWAY)
FRAUSCHER Birgit (AUSTRIA)
GAVVALA Jay (USA)
GONZALEZ Walter (COLOMBIA)
GOYAL Monisha (USA)
GRIVAS Athanasios (UK)
IMMONEN Arto (FINLAND)
IVANOVIC Jugoslav (NORWAY)
JACOBSON Erica (AUSTRALIA)
JARAMILLO B. Hector Alfredo (COLOMBIA)
JARAMILLO JIMINEZ Esteban (COLOMBIA)
JIAN Zhou (CHINA)
JUTILA Leena (FINLAND)
MEJIA-TUPA Marco (PERU)
MERVAALA Esa (FINLAND)
MOIEN AFSHARI Farzad (CANADA)
NICKELS Katherine (USA)

NOTGHI Lesley (UK)
OLSSON Gemma (AUSTRALIA)
PAPANASTASSIOU Alexander (USA)
PARRENT Andrew (CANADA)
PEREZ GALDOS Proel (PERU)
PONNUSAMY Athi (UK)
GIANG Guo (CHINA)
SANCHEZ GONZALEZ Federico (ARGENTINA)
SANKHE Milind (INDIA)
SHAH Palak (USA)
SHAO Xiaoqiu (CHINA)
SHAPIRO Michelle (CANADA)
STARREVELD Yves (CANADA)
STEVEN David (CANADA)
STONE Scellig (USA)
THORNTON Rachel (UK)
TISDALL Martin (UK)
WAGNER Louis (THE NETHERLAND)
WALSH Richard (USA)
WANG Jing (CHINA)
WEJTEN Nicholas (USA)
WONG-KIESEL Lily (USA)
ZHANG Bonnie (CHINA)





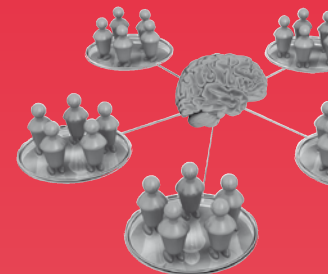
Graphic design : www.kom-graphik.pro © ma.generation - Photo: Hilmi Molino Stucky Venice

7th European SEEG Course

ON « Epileptogenic network
and language processing »

February 9th - 13th, 2016
Venice - Italy

Scientific Committee
Francesco Cardinale
Stefano Francione
Philippe Kahane
Giorgio Lo Russo
Philippe Ryvlin
Laura Tassi



FOR MORE INFORMATION, PLEASE CONTACT :
SEEG Course Secretariat - ANT CONGRES
154 av. de Lodève - 34070 MONTPELLIER - France
@ : seeg@ant-congres.com
Tel : +33 (0) 4 67 10 92 23

Location

Hôtel Sacacomie
4000, Chemin Yvon Plante
St-Alexis-des-Monts (QC) J0K 1V0
Tél : 819-265-4444 / 1-888-265-4414
www.sacacomie.com

SEEG COURSE SECRETARIAT - ANT CONGRES

Phone : + 33 4 67 10 92 23 - E-Mail : seeg@ant-congres.com

